

HEMLOCK TOWNSHIP COLUMBIA COUNTY, PA ZONING MAP

APPROVED BY:
TOWNSHIP PLANNING COMMISSION

DATE: _____

TOWNSHIP SUPERVISORS

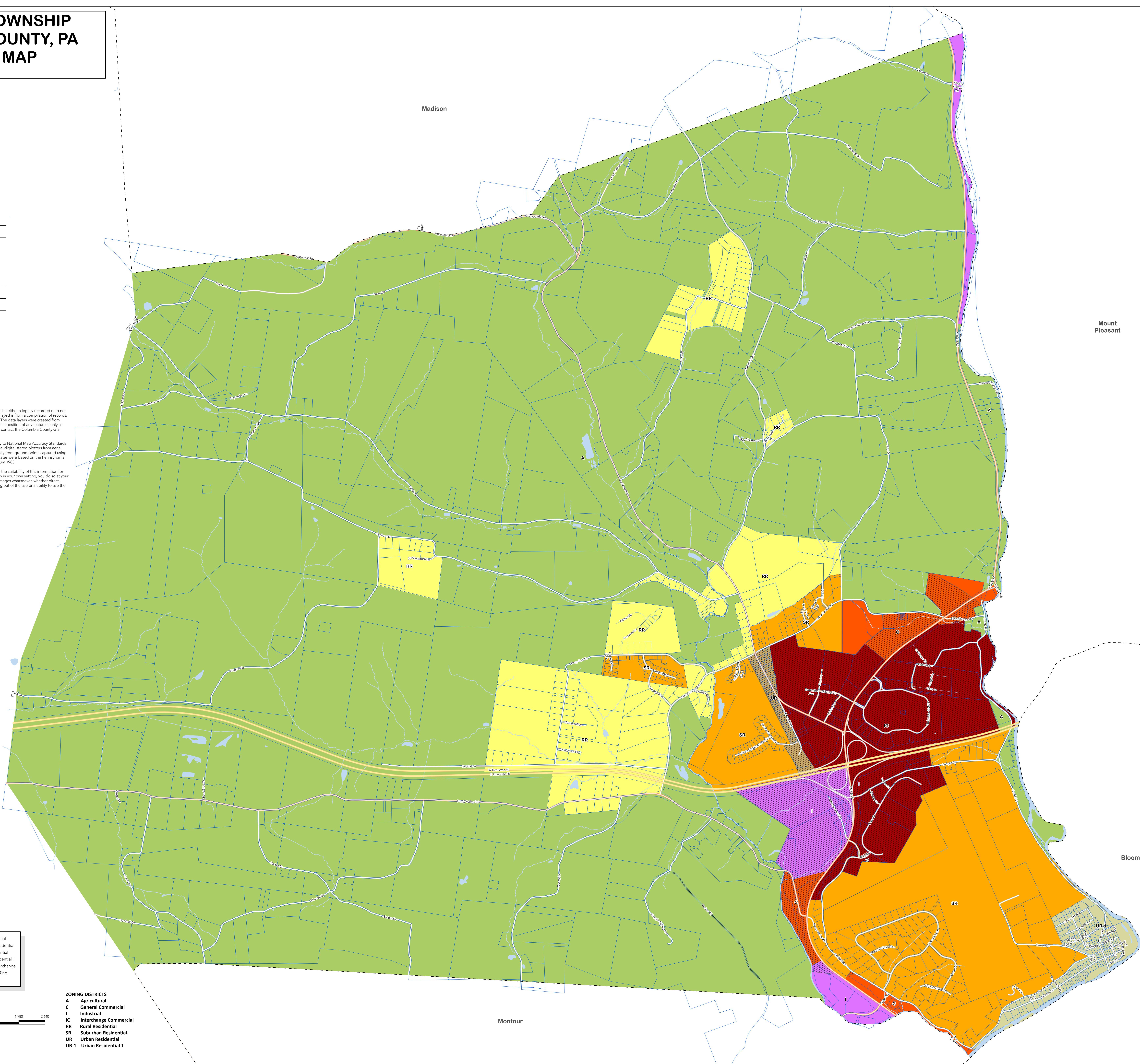
DATE: _____

DISCLAIMER

This drawing is intended for reference and illustrative purposes only. It is neither a legally recorded map nor a survey and is not intended to be used as such. The information displayed is from a compilation of records, information, and data developed and obtained from various sources. The data layers were created from different sources at different scales, and the actual or relative geographic position of any feature is only as accurate as the source information. If discrepancies are found, please contact the Columbia County GIS Office at (570) 387-4930.

Planimetric and topographic data were compiled photogrammetrically to National Map Accuracy Standards for 1" = 200' and 1" = 32' scale mapping using first-order fully analytical digital stereo plotters from aerial photography dated April 2016. This mapping was controlled analytically from ground points captured using first-order global positioning systems equipment. Planimetric coordinates were based on the Pennsylvania State Plane Coordinate System, North Zone, and North American Datum 1983.

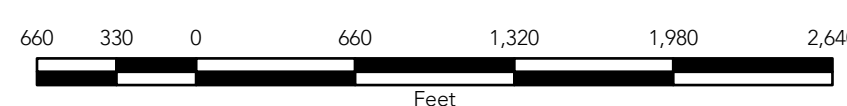
The County of Columbia makes no representations or warranties as to the suitability of this information for your own purpose, to the extent you use or implement this information in your own setting, you do so at your own risk. In no event will the County of Columbia be liable for any damages whatsoever, whether direct, consequential, incidental, special, or any claim for attorney fees, arising out of the use or inability to use the information provided herewith.



Waterlines	(RR) Rural Residential
Waterbody	(SR) Suburban Residential
Parcels	(UR) Urban Residential
(A) Agricultural	(UR-1) Urban Residential 1
(C) General Commercial	Flex Complex Interchange
(I) Industrial	Flex Interchange Ring
(IC) Interchange Commercial	

ZONING DISTRICTS

A	Agricultural
C	General Commercial
I	Industrial
IC	Interchange Commercial
RR	Rural Residential
SR	Suburban Residential
UR	Urban Residential
UR-1	Urban Residential 1



HEMLOCK TOWNSHIP COLUMBIA COUNTY, PA ZONING MAP

APPROVED BY:
TOWNSHIP PLANNING COMMISSION

DATE: _____

TOWNSHIP SUPERVISORS

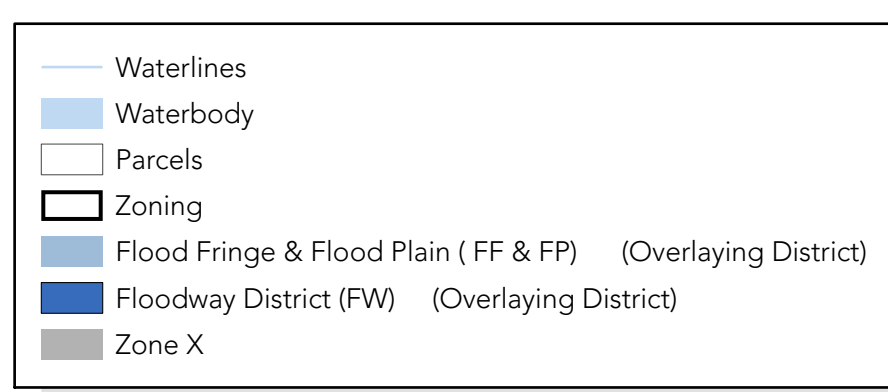
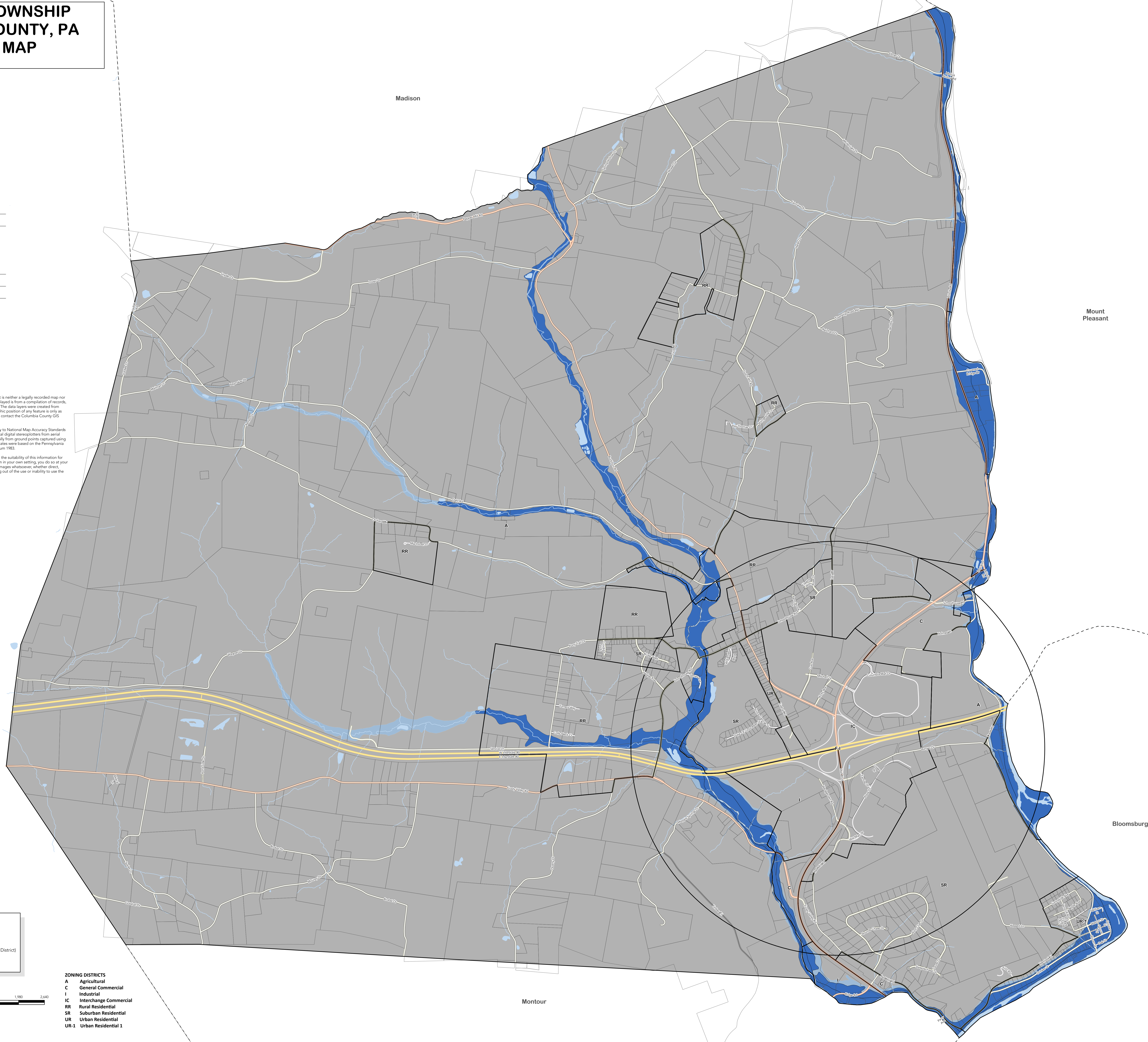
DATE: _____

DISCLAIMER

This drawing is intended for reference and illustrative purposes only. It is neither a legally recorded map nor a survey and is not intended to be used as such. The information displayed is from a compilation of records, information, and data developed and obtained from various sources. The data layers were created from different sources at different scales, and the actual or relative geographic position of any feature is only as accurate as the source information. If discrepancies are found, please contact the Columbia County GIS Office at (570) 387-4930.

Planimetric and topographic data were compiled photogrammetrically to National Map Accuracy Standards for 1" = 200' and 1" = 50' scale mapping using first-order fully analytical digital stereoplotters from aerial photography dated April 2016. This mapping was controlled analytically from ground points captured using first-order global positioning systems equipment. Planimetric coordinates were based on the Pennsylvania State Plane Coordinate System, North Zone, and North American Datum 1983.

The County of Columbia makes no representations or warranties as to the suitability of this information for your own purpose, to the extent you use or implement this information in your own setting, you do so at your own risk. In no event will the County of Columbia be liable for any damages whatsoever, whether direct, consequential, incidental, special, or any claim for attorney fees, arising out of the use or inability to use the information provided herewith.



- ZONING DISTRICTS**
- A Agricultural
 - C General Commercial
 - I Industrial
 - IC Interchange Commercial
 - RR Rural Residential
 - SR Suburban Residential
 - UR Urban Residential
 - UR-1 Urban Residential 1

