

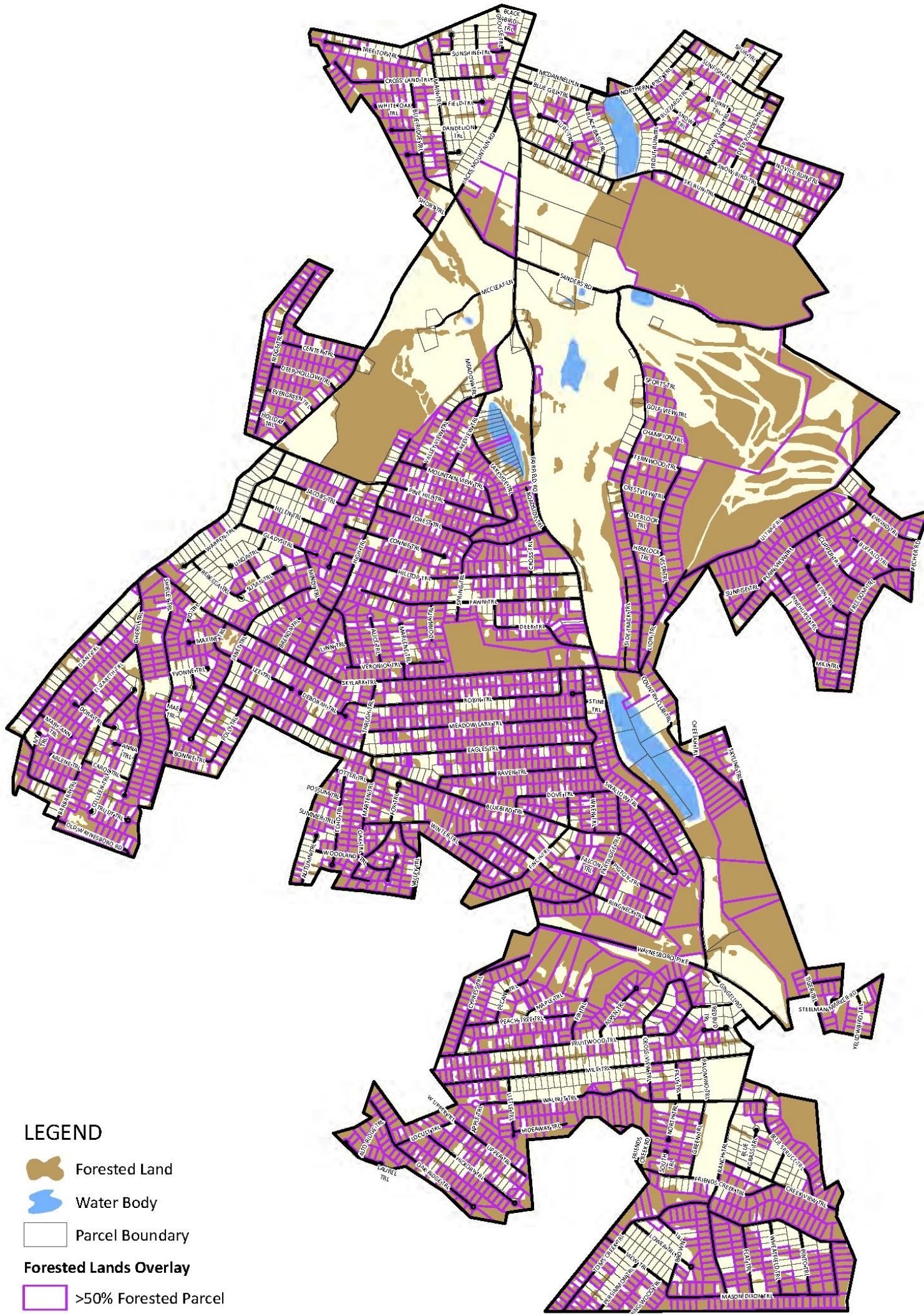
ZONING

27 Attachment 4





Appendix D

CARROLL VALLEY BOROUGH

Adams County, Pennsylvania



LEGEND

-  Forested Land
-  Water Body
-  Parcel Boundary
- Forested Lands Overlay**
-  >50% Forested Parcel



ACOPD - GIS Division | October 31, 2018 S.W.
Data Source: ACOPD, AC Tax Services
Forested Land digitized from 2016 aerial photography

Zoning Map

Forested Lands Overlay



0 750 1,500 3,000
Feet