

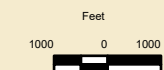


CRANBERRY TOWNSHIP

SHEET 1 of 2

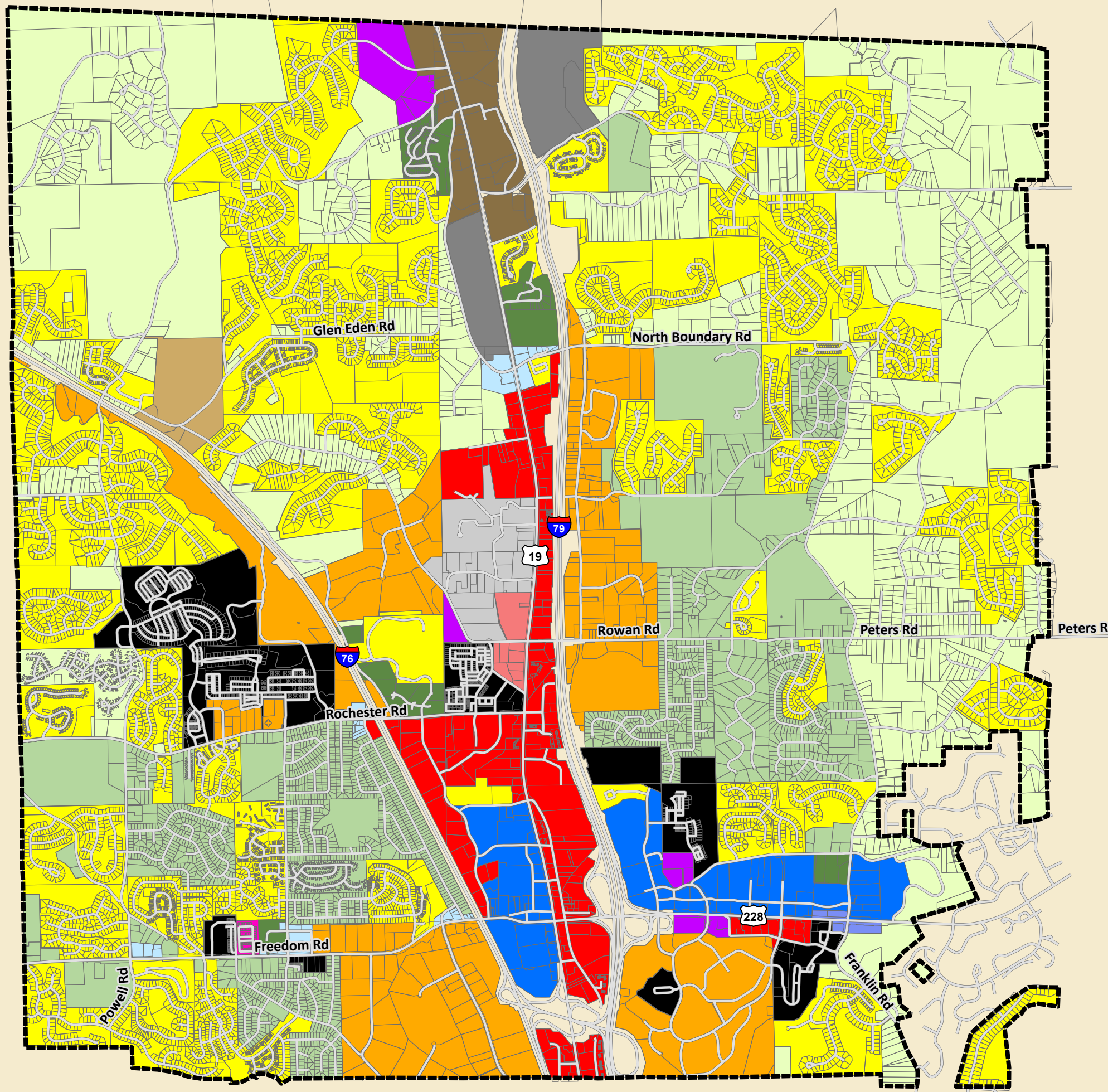
Zoning Districts

-  Township Boundary
-  R-1 - Rural Residential
-  R-2 - Single Family Residential
-  R-3 - Multi Family Residential
-  PRD - Planned Residential Development
-  RMU - Residential Mixed Use
-  MU - Mixed Use
-  C-1 - Convenience Commercial
-  C-2 - Highway Commercial
-  C-3 - Regional Commercial
-  BPK - Business Park
-  SU-1 - Special Use
-  SP-1 - Special Growth
-  PIC - Planned Industrial/Commercial
-  TLI - Transitional Light Industrial
-  I-L - Industrial Light
-  CCD - Community Character District
-  PN - Planned Neighborhood



Cranberry Township
Butler County
February 6th, 2025

For Final Parcel Determination, Please Contact:
Community Development Department
2525 Rochester Road, Suite 400
Phone #: 724.776.4806
E-mail: ron.henshaw@cranberrytownship.org

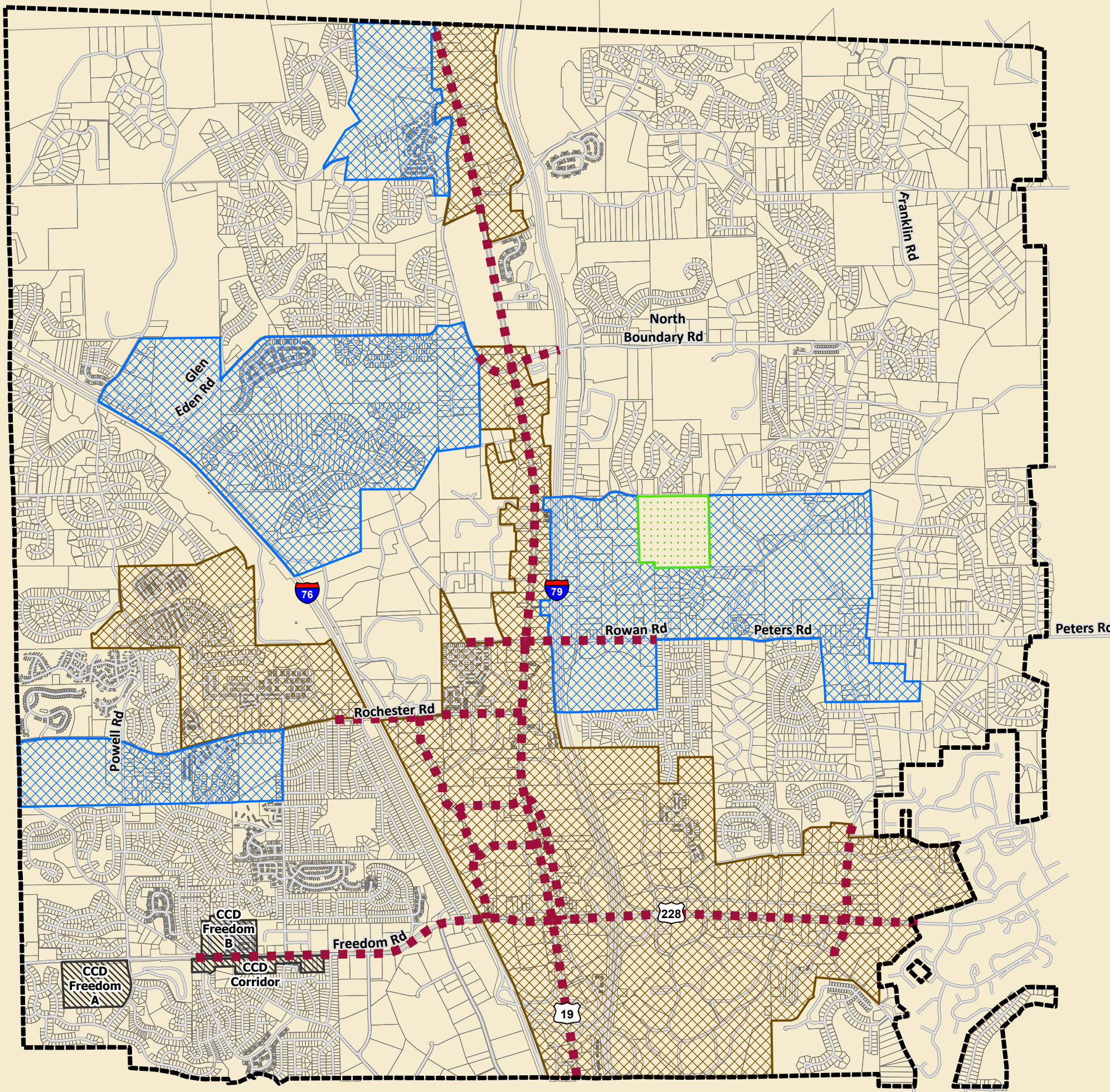


CRANBERRY TOWNSHIP **built for you.**



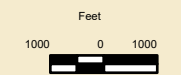
CRANBERRY TOWNSHIP

SHEET 2 of 2



Zoning Overlays

- Township Boundary
- PN Overlay
- Specific CCD Overlay (as labeled)
- General CCD Overlay
- Agriculture Security Area
- Streetscape Enhancement Overlay
(All properties abutting road right-of-way)



Cranberry Township
Butler County
February 6th, 2025

For Final Parcel Determination, Please Contact:
Community Development Department
2525 Rochester Road, Suite 400
Phone #: 724.776.4806
E-mail: ron.henshaw@cranberrytownship.org

CRANBERRY TOWNSHIP **built for you.**